



CPS-210 CONCEALED FASTENER TRESPA PANEL SYSTEM

System Features:

- Low profile system – Varies by panel thickness
 - 10mm Panels – $2\frac{5}{8}$ " (without shims).
 - 13mm Panels – $2\frac{1}{2}$ " (without shims).
- Drained Back Ventilated System (DBVS).
- Allows the use of 10mm ($\frac{3}{8}$ "), and 13mm ($\frac{1}{2}$ ") Phenolic Sheet stock.
- Four sizes of Phenolic sheet stock available:
 - 5' x 10' (nominal). Maximum usable size – $59\frac{3}{4}$ " x $119\frac{1}{2}$ ".
 - 6' x 8' (nominal). Maximum usable size – $72\frac{3}{4}$ " x $99\frac{3}{4}$ ".
 - 6' x 12' (nominal). Maximum usable size – $72\frac{3}{4}$ " x 143".
 - 7' x 14' (nominal). Maximum usable size – $83\frac{1}{4}$ " x $167\frac{1}{2}$ ".
- Tested system:
 - ASTM E 330 Structural Loads
 - ASTM E 119 Fire Tests of Building Materials
 - ASTM E 84 Surface Burning Characteristics
- Manufactured with in-excess of five [5] years experience in this type of panel system.
- Easily accommodates vertical, soffit, sloped, and coping panels.
- Especially suited for square and rectangular column covers.

System Benefits:

- Simplicity of Installation.
- Mounting extrusions shipped loose – More panels per delivery.
- Large and varied selection of colors and finishes - includes "Wood Grain" and "Naturals"
- LEED®:
 - Extrusion material contains approximately 23% recycled content.

System Notes:

- Sequential panel installation.
 - Early decision must be made on direction of installation.
- Mounting Clips and Rivets shipped loose.
 - Gesipa® Powerbird Blind Rivet Tool not furnished by CPS (recommended tool for installation of CPS-210 brackets to concealed side of Trespa panels)
- Weather Resistant Barrier (WRB) required behind panels.
- Curved panels are not available with the CPS-210 fixing system

July 20, 2012

California Panel Systems, LP

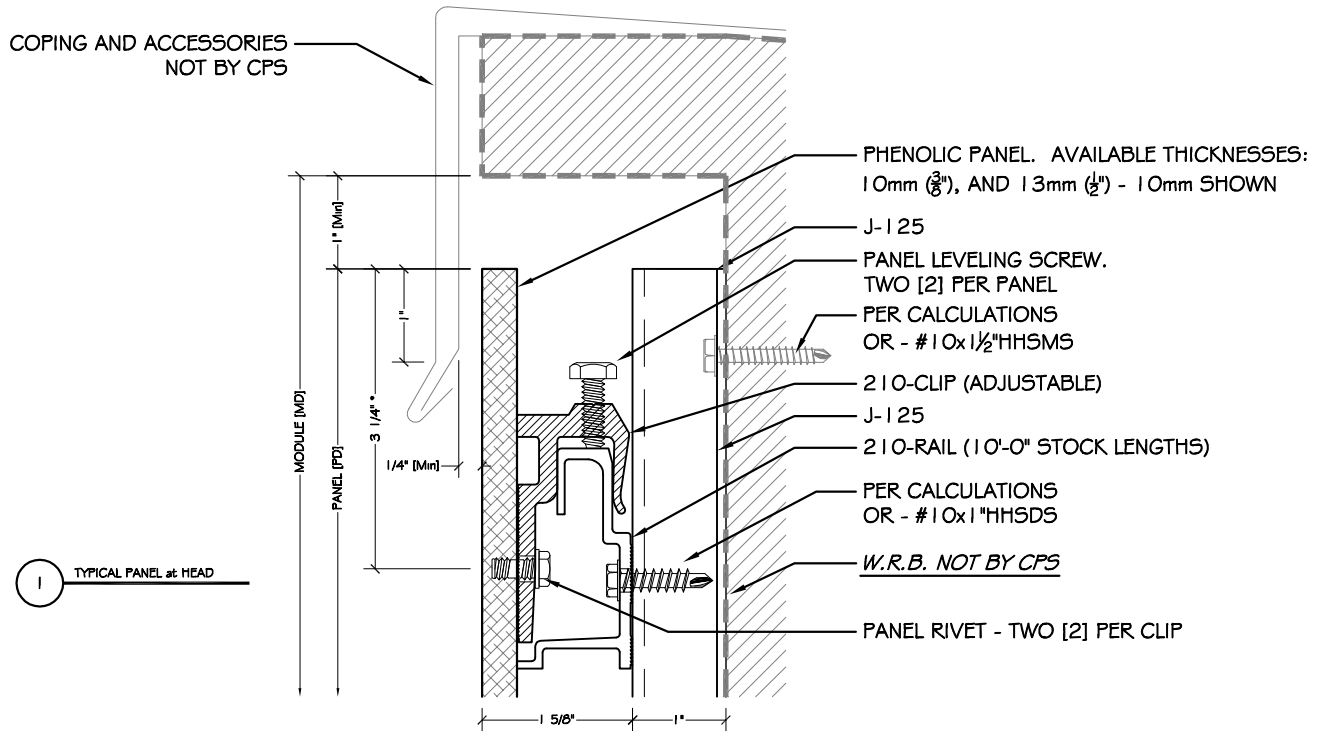
1020 North Marshall Avenue • El Cajon • CA • 92020 • Voice: 619.956.0866 • Fax: 619.956.0855

www.calpanelsystems.com

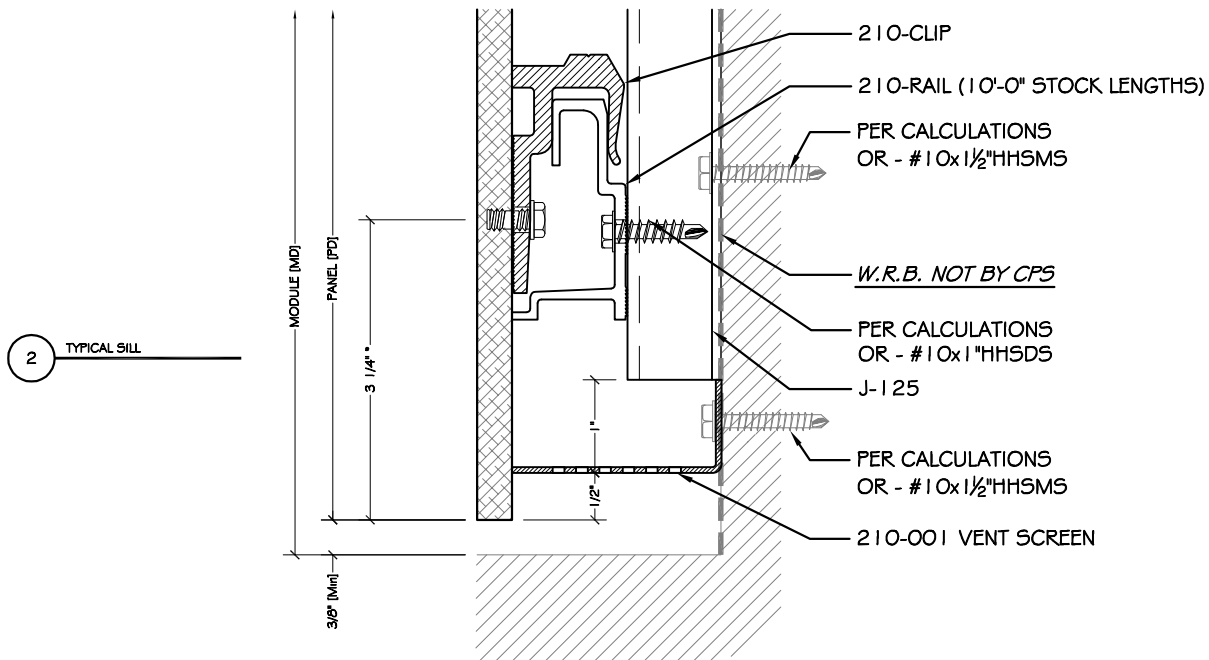
aluminum composite panels aluminum plate panels
sunshades Trespa panels column covers



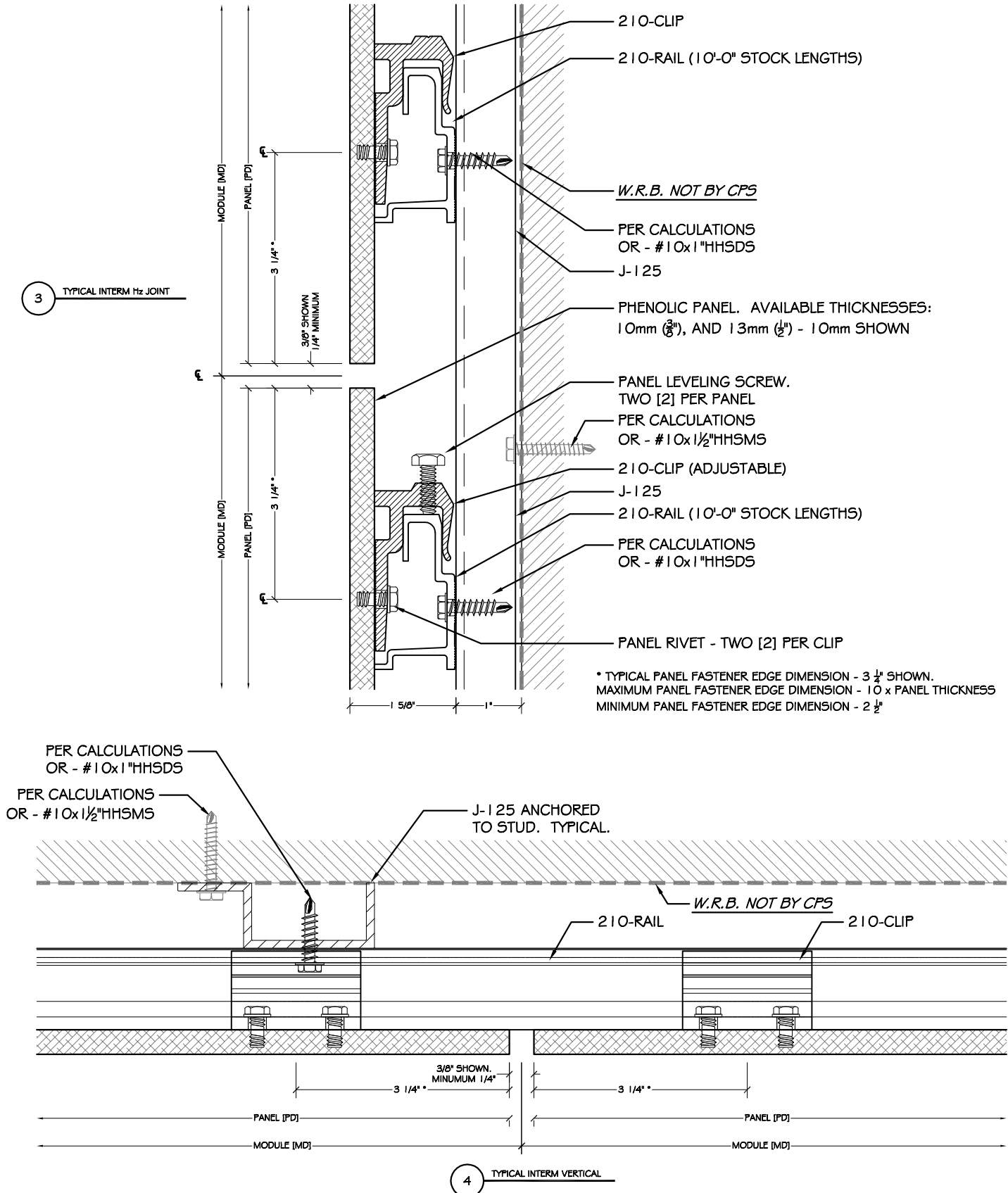
CPS-210 CONCEALED FASTENER TRESPA PANEL SYSTEM



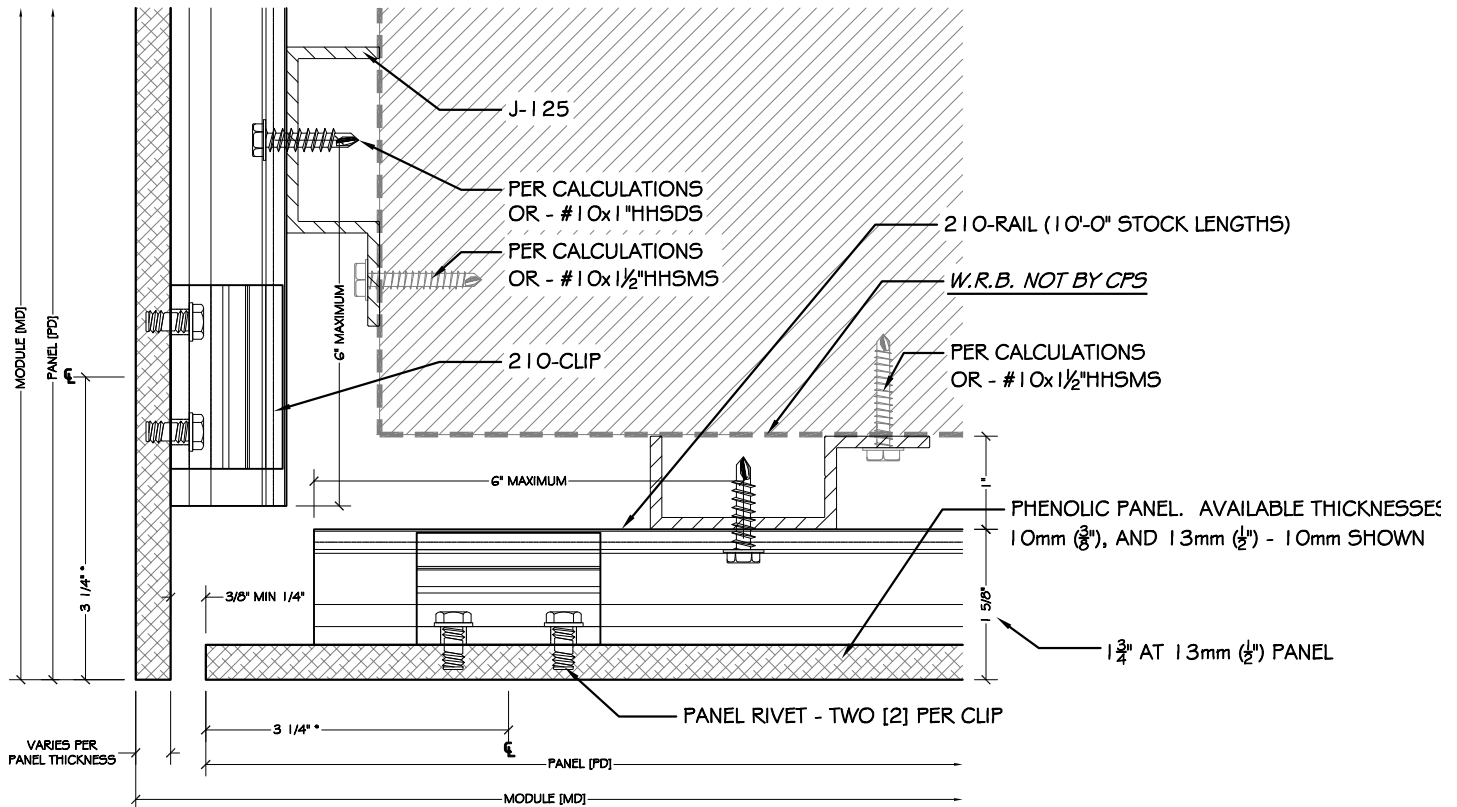
* TYPICAL PANEL FASTENER EDGE DIMENSION - 3 1/4" SHOWN.
MAXIMUM PANEL FASTENER EDGE DIMENSION - 10 x PANEL THICKNESS
MINIMUM PANEL FASTENER EDGE DIMENSION - 2 1/2"



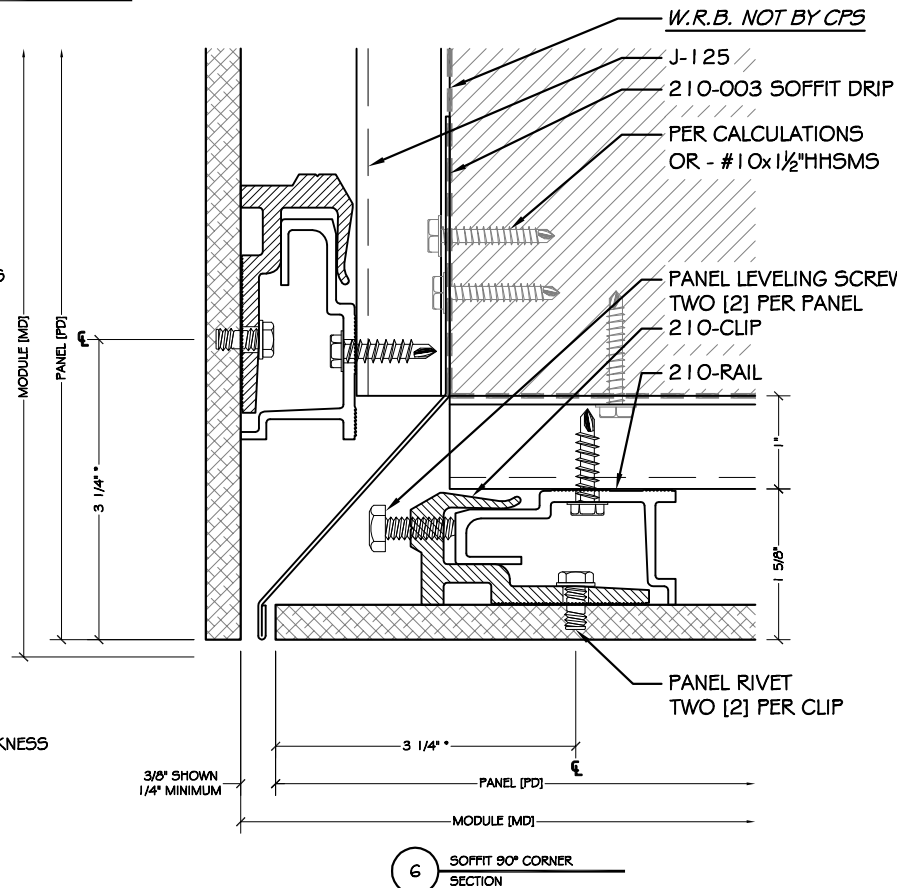
CPS-210 CONCEALED FASTENER TRESPA PANEL SYSTEM



CPS-210 CONCEALED FASTENER TRESPA PANEL SYSTEM

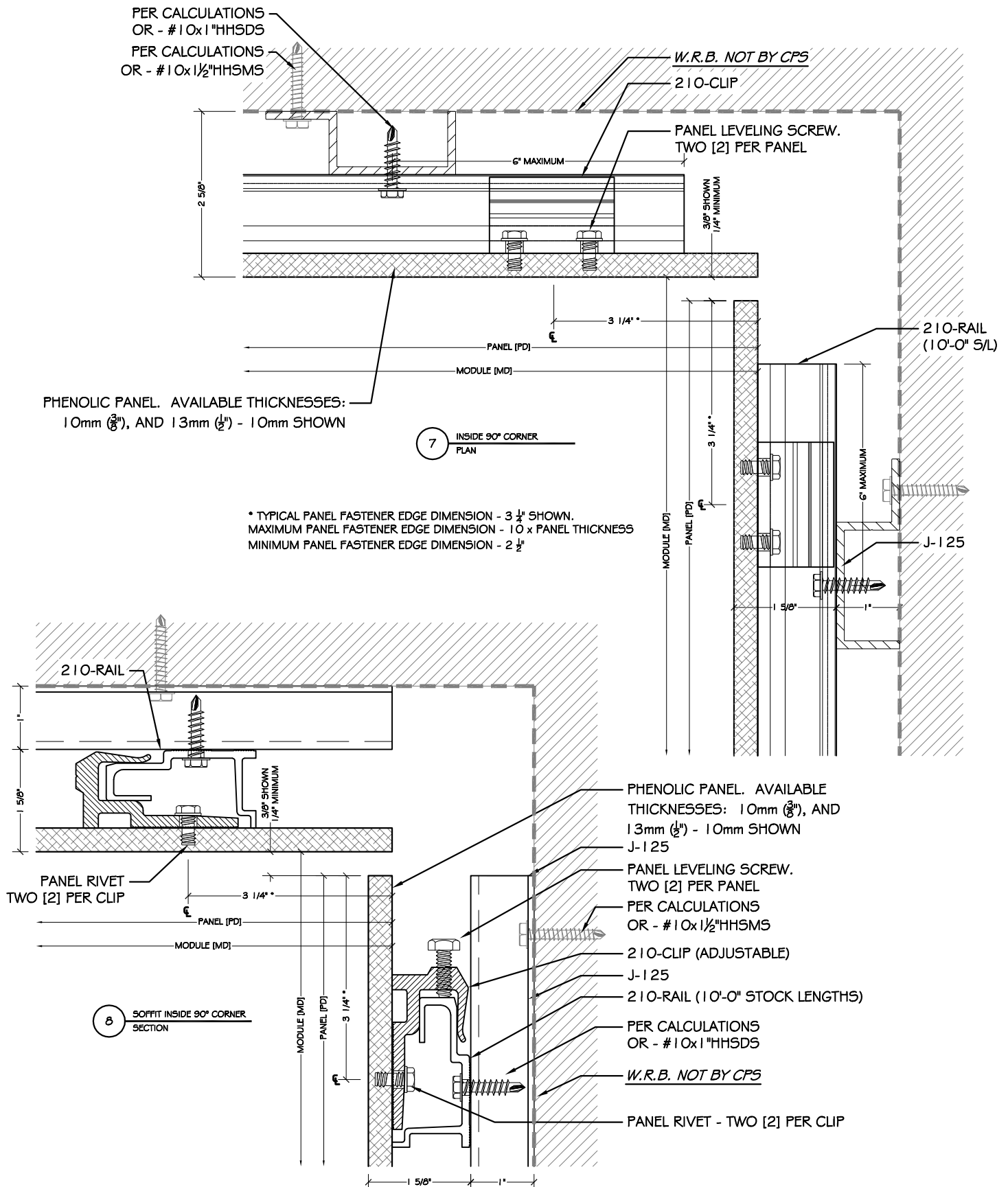


* TYPICAL PANEL FASTENER EDGE DIMENSION - 3 1/4" SHOWN.
MAXIMUM PANEL FASTENER EDGE DIMENSION - 10 x PANEL THICKNESS
MINIMUM PANEL FASTENER EDGE DIMENSION - 2 1/2"



* TYPICAL PANEL FASTENER EDGE DIMENSION - 3 1/4" SHOWN.
MAXIMUM PANEL FASTENER EDGE DIMENSION - 10 x PANEL THICKNESS
MINIMUM PANEL FASTENER EDGE DIMENSION - 2 1/2"

CPS-210 CONCEALED FASTENER TRESPA PANEL SYSTEM

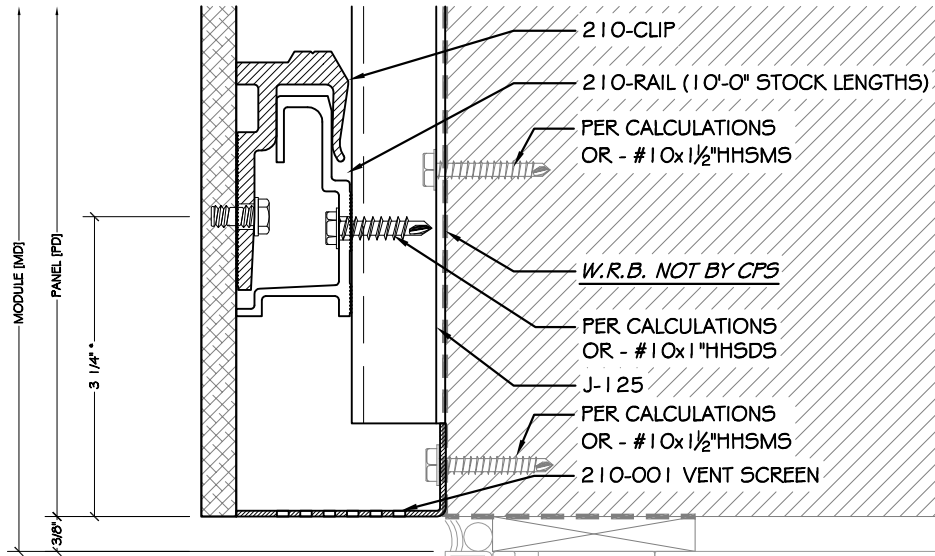


Scale: 6" = 1'-0"

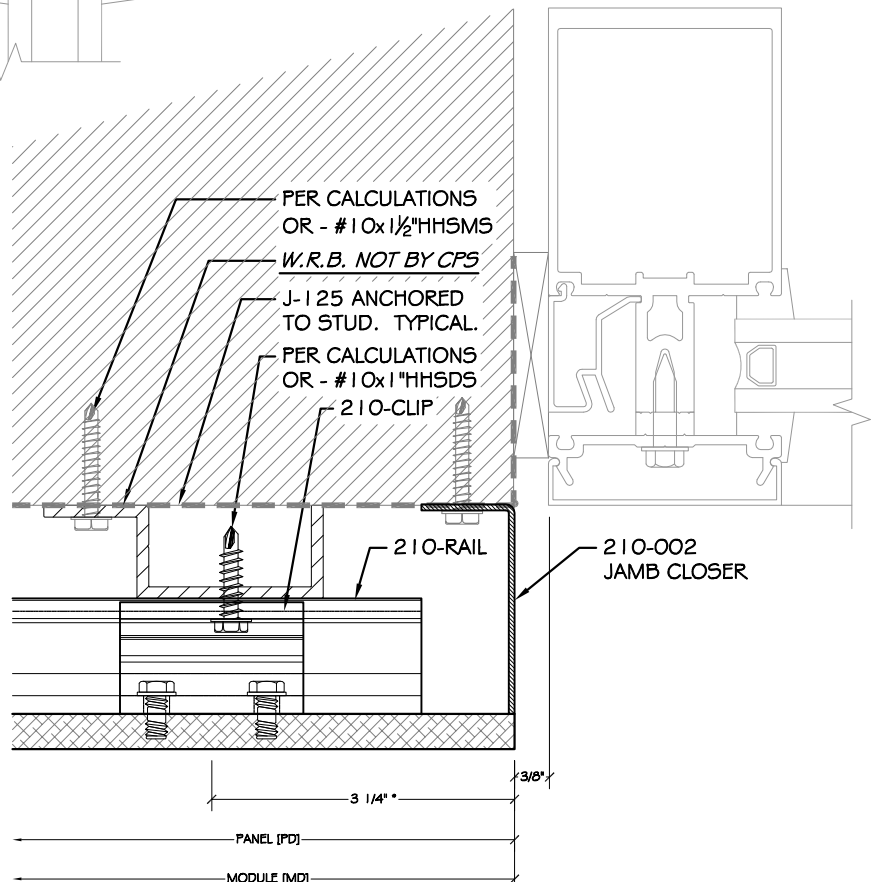
1020 N. MARSHALL AVE., EL CAJON, CA 92020
Ph. 619-956-0866 Fx. 619-956-0855

Pg. 210-004
July 20, 2012

CPS-210 CONCEALED FASTENER TRESPA PANEL SYSTEM



DETAILS AT HM DOORS, STOREFRONT
AND CURTAIN WALL SIMILAR.



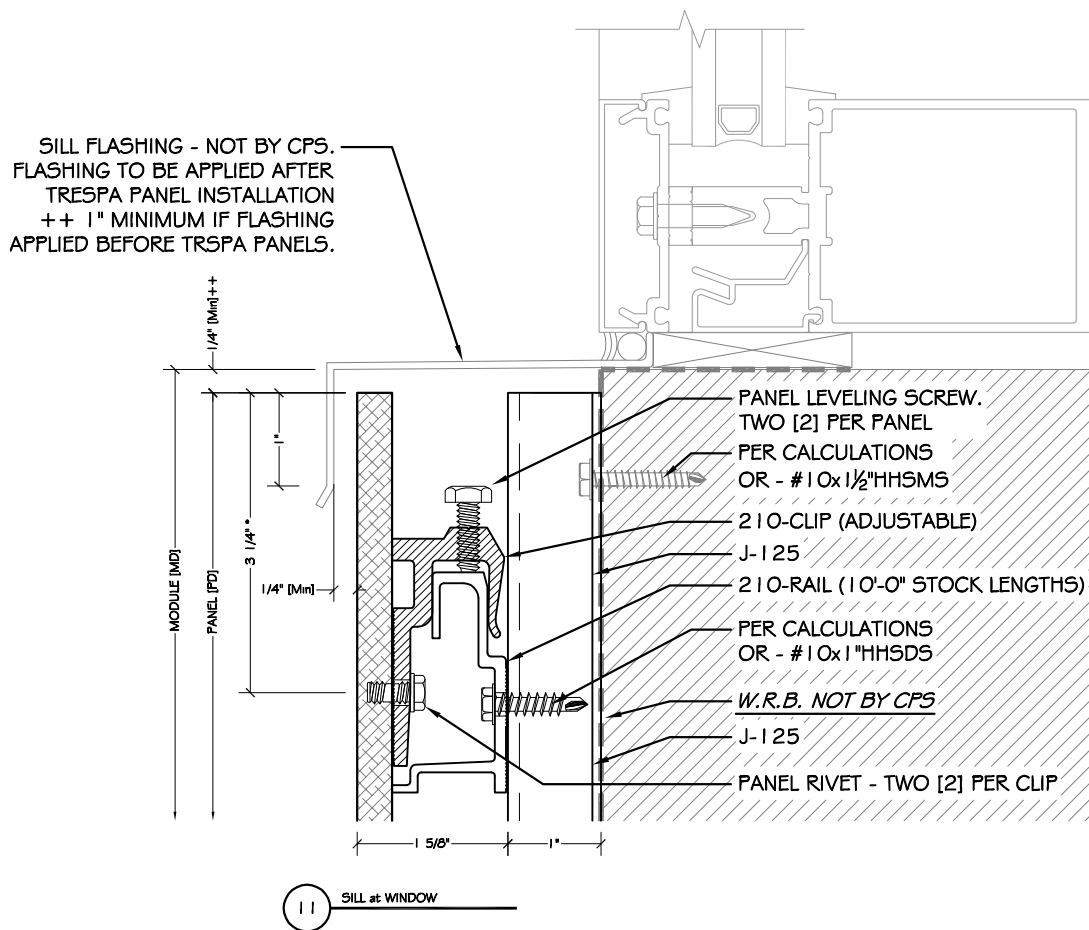
* TYPICAL PANEL FASTENER EDGE DIMENSION - 3 1/4" SHOWN.
MAXIMUM PANEL FASTENER EDGE DIMENSION - 10 x PANEL THICKNESS

Scale: 6" = 1'-0"

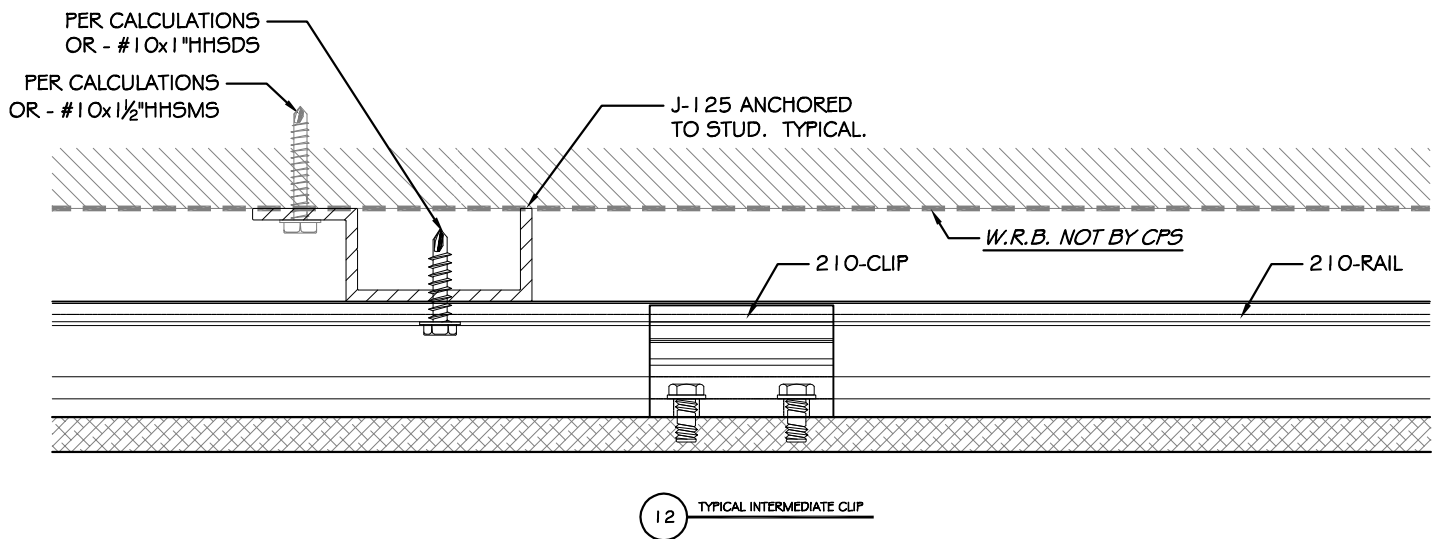
1020 N. MARSHALL AVE., EL CAJON, CA 92020
Ph. 619-956-0866 Fx. 619-956-0855

Pg. 210-005
July 20, 2012

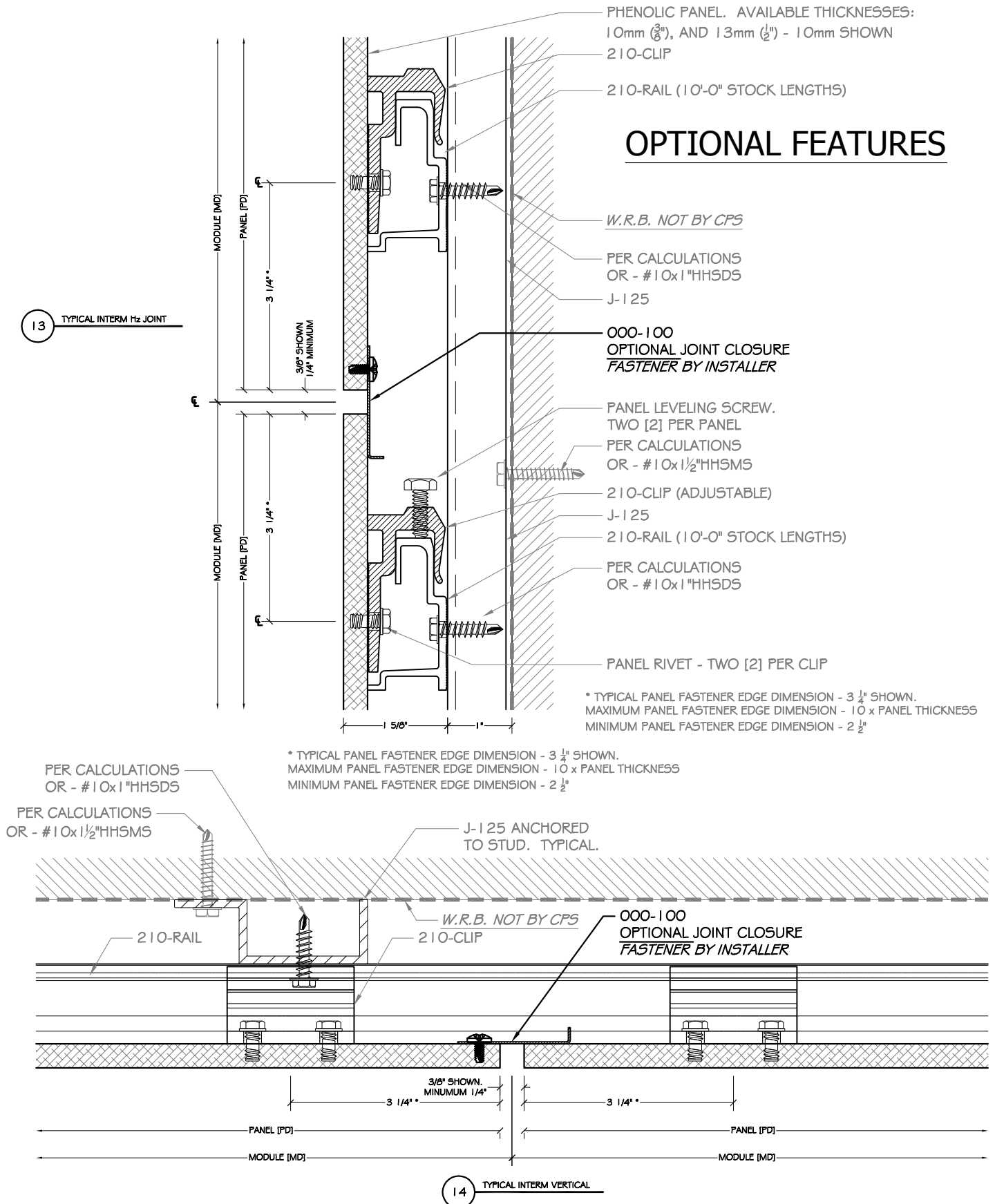
CPS-210 CONCEALED FASTENER TRESPA PANEL SYSTEM



* TYPICAL PANEL FASTENER EDGE DIMENSION - 3 1/4" SHOWN.
MAXIMUM PANEL FASTENER EDGE DIMENSION - 10 x PANEL THICKNESS
MINIMUM PANEL FASTENER EDGE DIMENSION - 2 1/2"

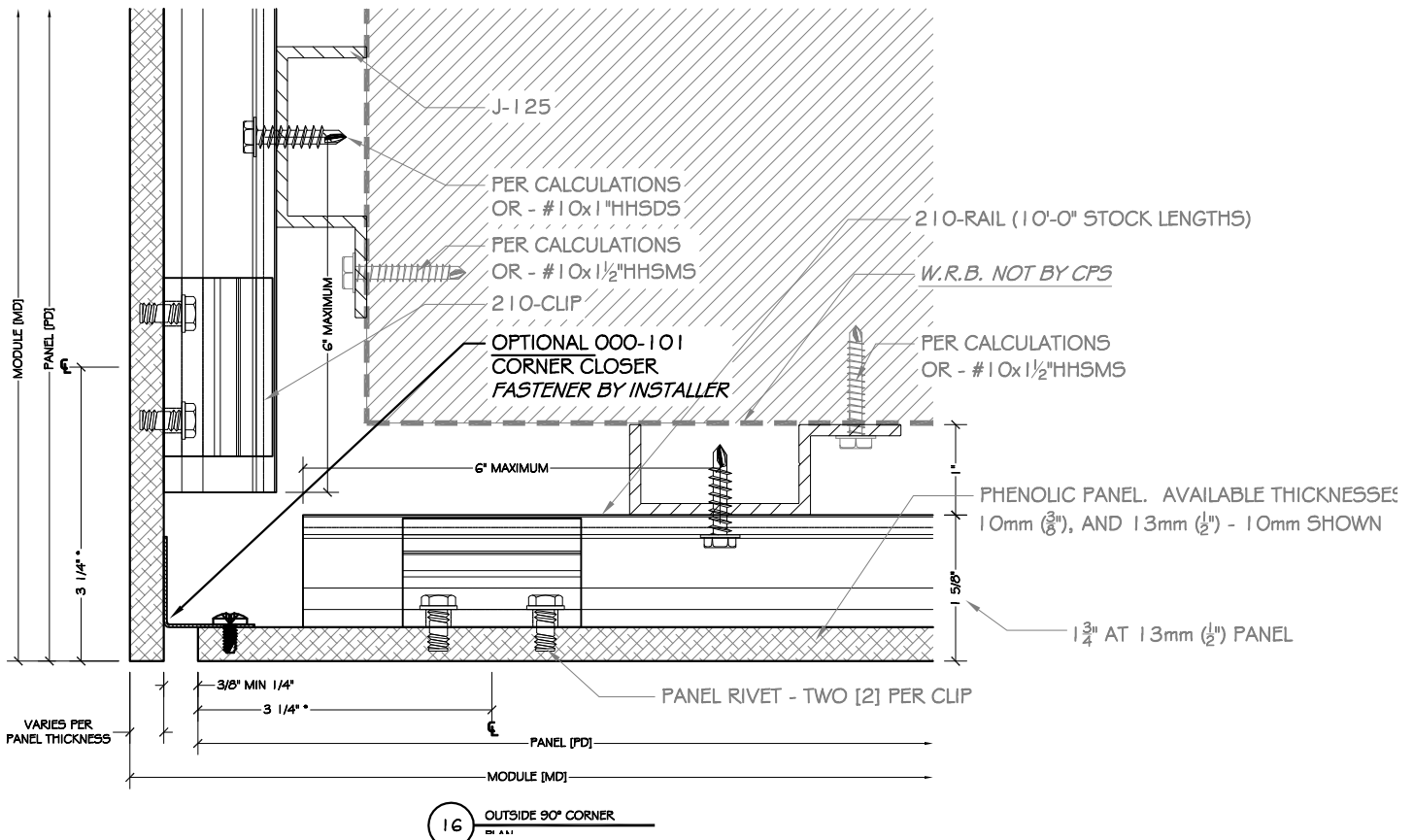
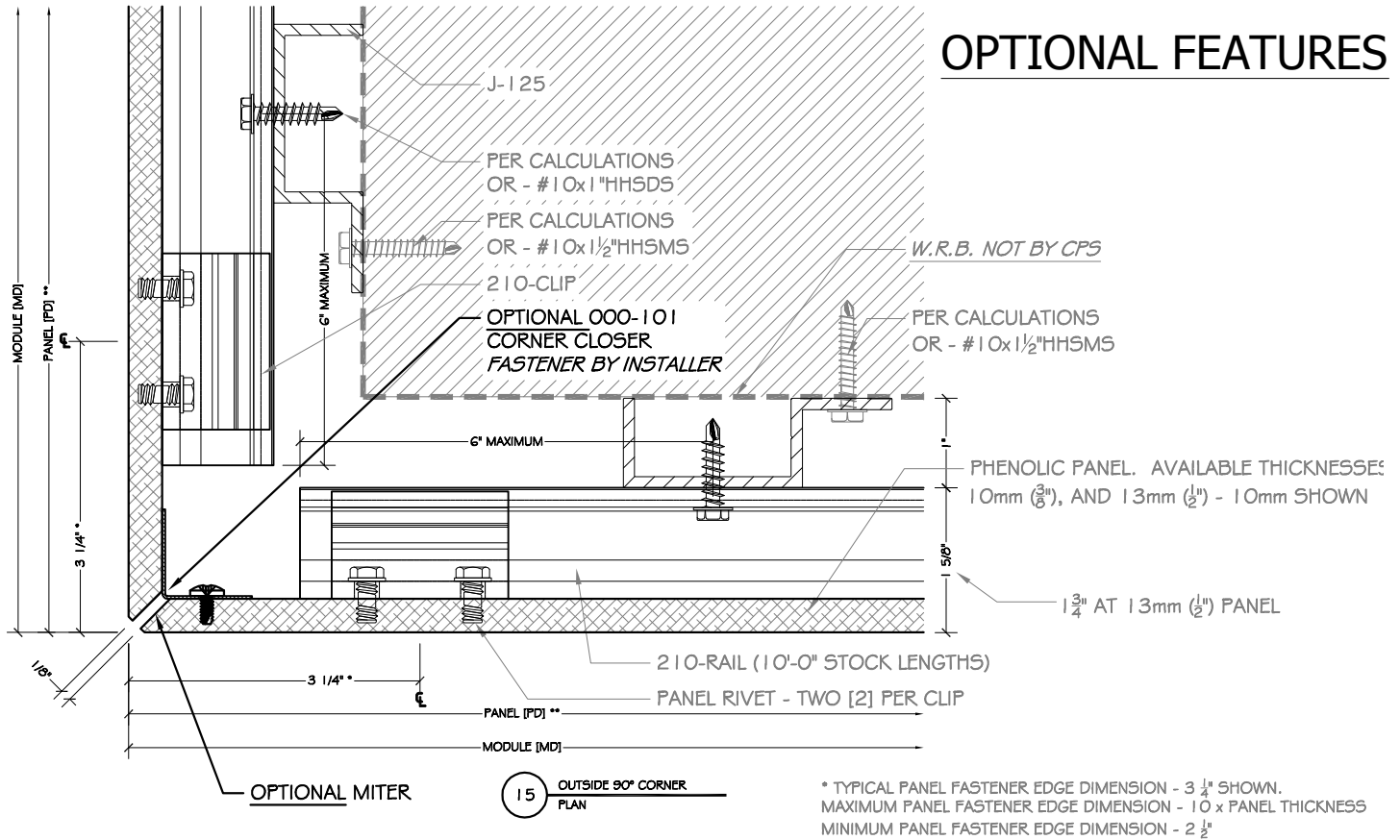


CPS-210 CONCEALED FASTENER TRESPA PANEL SYSTEM



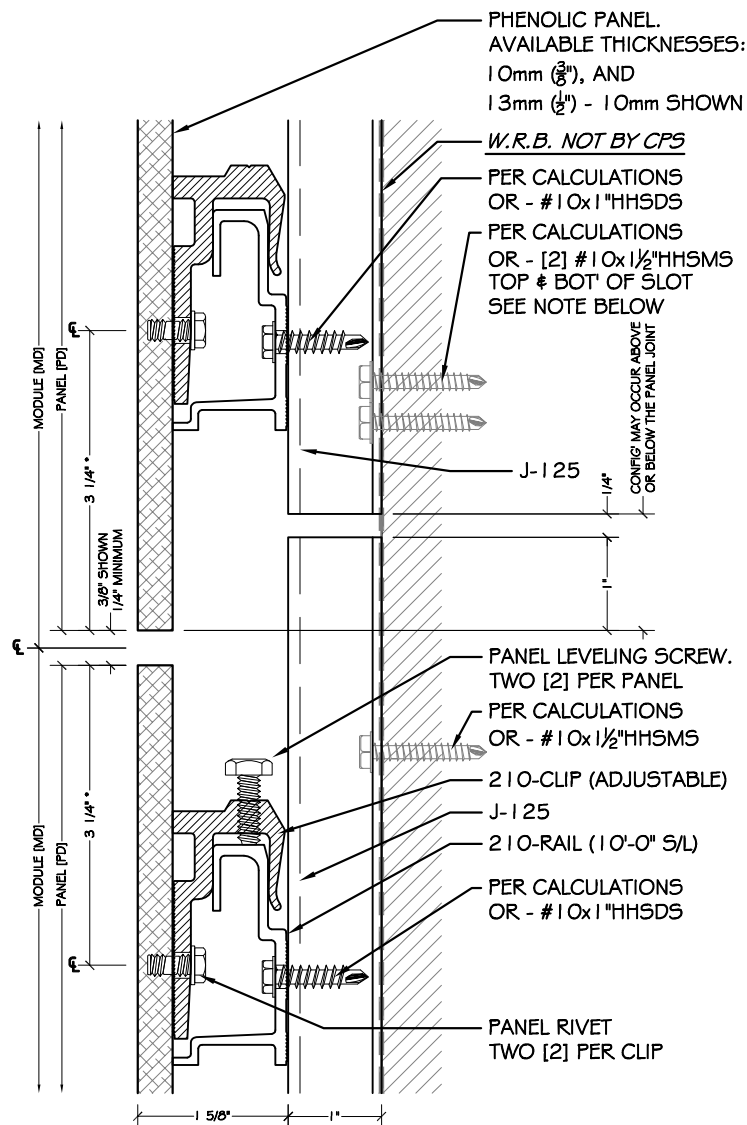
CPS-210 CONCEALED FASTENER TRESPA PANEL SYSTEM

OPTIONAL FEATURES

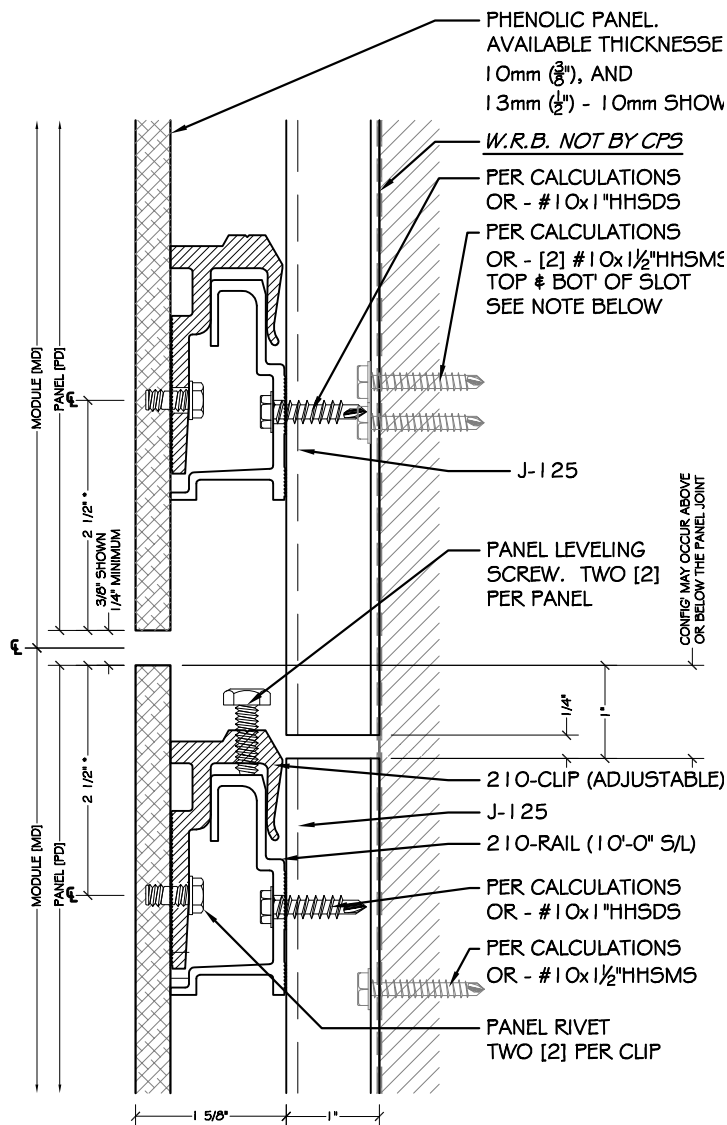


CPS-210 CONCEALED FASTENER TRESPA PANEL SYSTEM

EXTRUSION EXPANSION JOINT



17 EXTRUSION EXPANSION Jt
TYPICAL



18 EXTRUSION EXPANSION Jt
AT MINIMUM FASTENER EDGE

- NOTE: THE TWO [2] STRUCTURAL FASTENERS CONFIGURATION SHOWN ABOVE SHOULD ALWAYS OCCUR AT THE BOTTOM SLOT ON THE SYSTEM EXTRUSION CLOSEST TO THE EXPANSION JOINT, TO FORCE THE EXPANSION OF THE EXTRUSION UP AND AWAY FROM THE EXPANSION JOINT.
- NOTE: THE EXTRUSION EXPANSION JOINT MUST NEVER OCCUR WITHIN THE "BODY" OF THE PANEL. I.E., PAST THE PANEL EDGE FASTENERS.

* TYPICAL PANEL FASTENER EDGE DIMENSION - 3 1/4" SHOWN.
MAXIMUM PANEL FASTENER EDGE DIMENSION - 10 x PANEL THICKNESS
MINIMUM PANEL FASTENER EDGE DIMENSION - 2 1/2"