



CPS-110-285 EXPOSED FASTENER TRESPA PANEL SYSTEM

System Features:

- Low profile system – Varies by panel thickness
 - 8mm Panels – $1\frac{5}{16}$ " (without shims).
 - 10mm Panels – $1\frac{3}{8}$ " (without shims).
 - 13mm Panels – $1\frac{1}{2}$ " (without shims).
- Drained Back Ventilated System (DBVS).
- Allows the use of 8mm ($\frac{5}{16}$ "), 10mm ($\frac{3}{8}$ "), and 13mm ($\frac{1}{2}$ ") Phenolic Sheet stock.
- Four sizes of Phenolic sheet stock available:
 - 5' x 10' (nominal). Maximum usable size – 59 $\frac{3}{4}$ " x 119 $\frac{1}{2}$ ".
 - 6' x 8' (nominal). Maximum usable size – 72 $\frac{3}{4}$ " x 99 $\frac{3}{4}$ ".
 - 6' x 12' (nominal). Maximum usable size – 72 $\frac{3}{4}$ " x 143".
 - 7' x 14' (nominal). Maximum usable size – 83 $\frac{1}{4}$ " x 167 $\frac{1}{2}$ ".
- Tested system:
 - ASTM E 330 Structural Loads
 - NFPA-285 Fire Propagation Characteristics
 - ASTM E 119 Fire Tests of Building Materials
 - ASTM E 84 Surface Burning Characteristic's
- Manufactured with in-excess of five [5] years experience in this type of panel system.
- Non-sequential panel installation.
 - Allows the removal and replacement of individual panels without disturbing adjacent panels.
- Easily accommodates vertical, soffit, sloped, and coping panels.
- Especially suited for square and rectangular column covers.

System Benefits:

- Simplicity of fabrication.
- Simplicity of Installation.
- Mounting extrusions shipped loose – More panels per delivery.
- Large and varied selection of colors and finishes - includes "Wood Grain" and "Naturals"
- LEED®:
 - Extrusion material contains approximately 23% recycled content.

System Notes:

- Weather Resistant Barrier (WRB) required behind panels.
 - Specific WRB required for NFPA-285 compliance:
 - Vaproshield® WallShield® or WrapShield® (Mechanically Fastened)
 - TYVEK® Commercial Wrap sheet membrane
- Horizontal strap backing may be required for vertical anchorage of extrusions.
- Limitations on curved (non-flat) panels in accordance with Trespa Technical Bulletin # 3.

July 20, 2012

California Panel Systems, LP

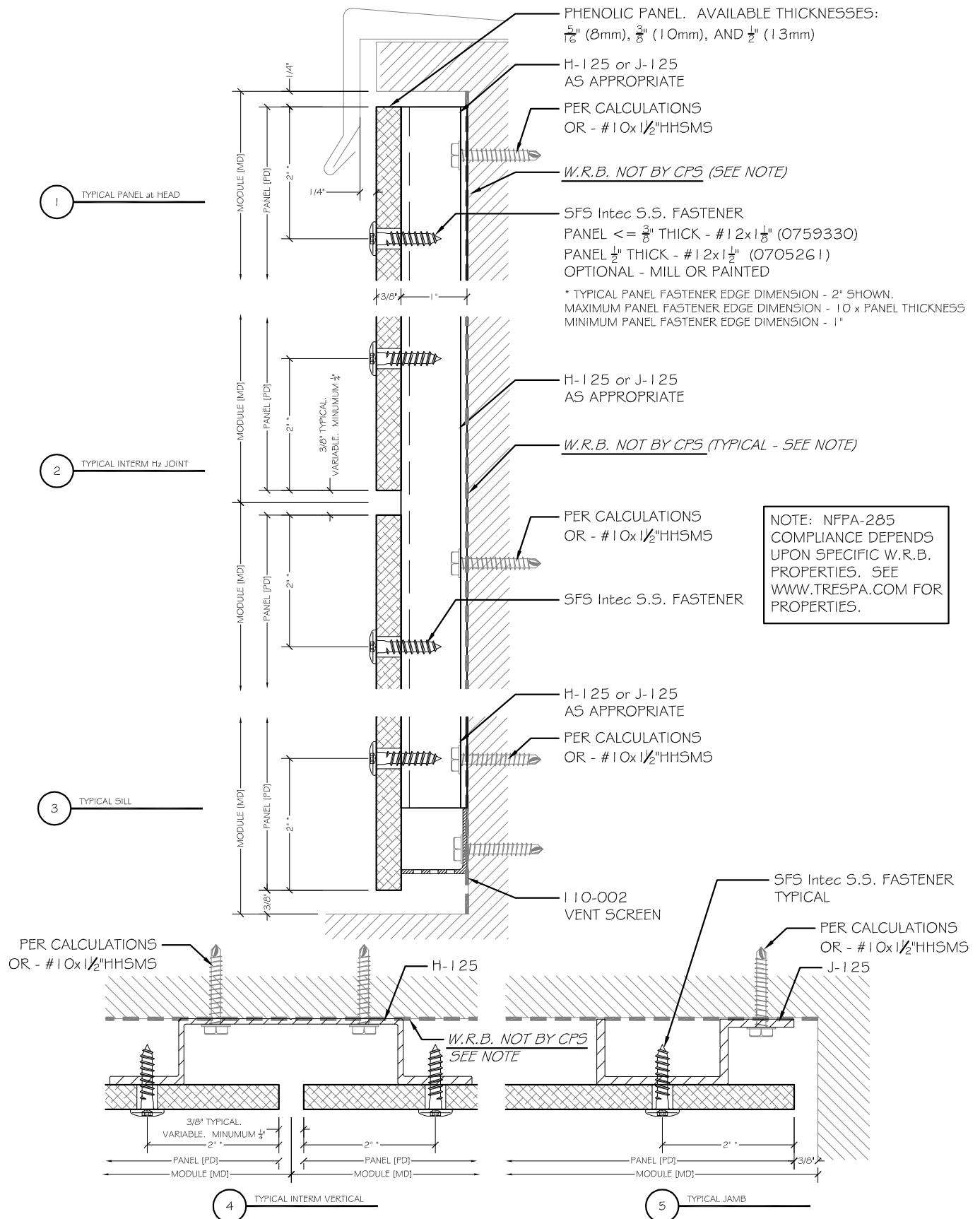
1020 North Marshall Avenue • El Cajon • CA • 92020 • Voice: 619.956.0866 • Fax: 619.956.0855

www.calpanelsystems.com

aluminum composite panels aluminum plate panels
sunshades Trespa panels column covers

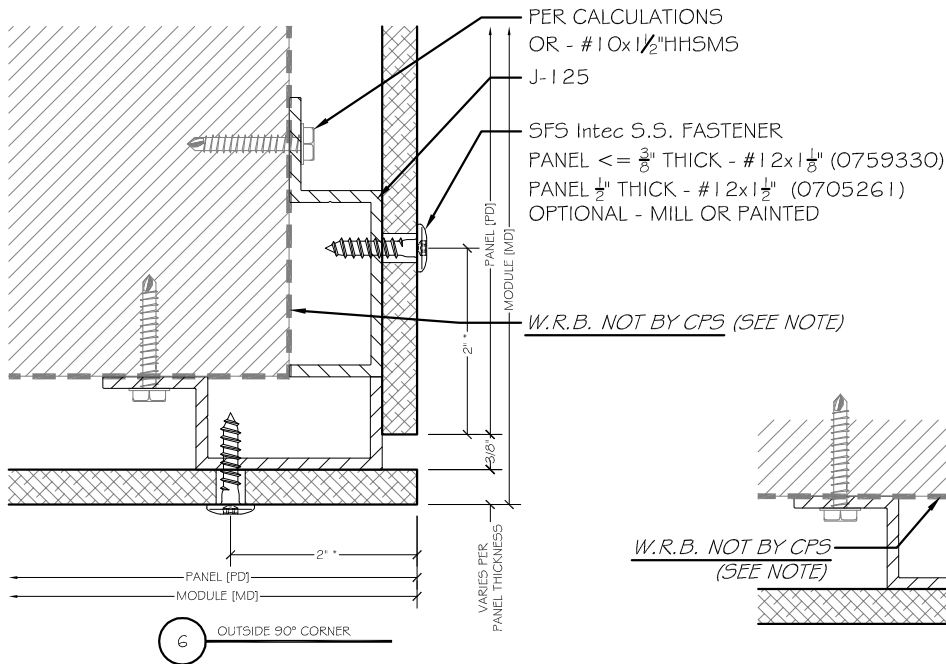


CPS-110-285 EXPOSED FASTENER TRESPA PANEL SYSTEM

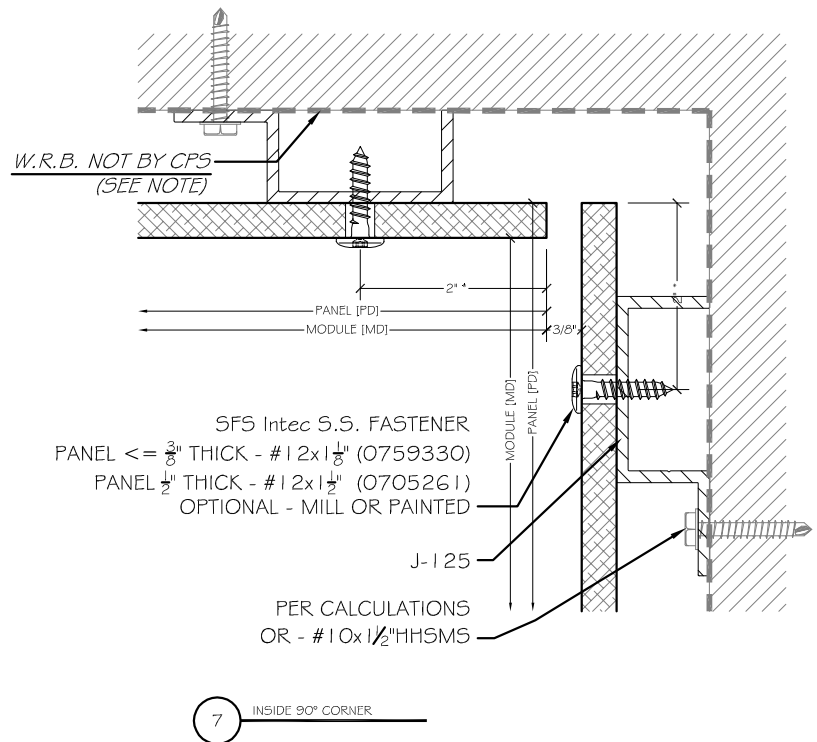


NOTE: NFPA-285
COMPLIANCE DEPENDS
UPON SPECIFIC W.R.B.
PROPERTIES. SEE
WWW.TRESPA.COM FOR
PROPERTIES.

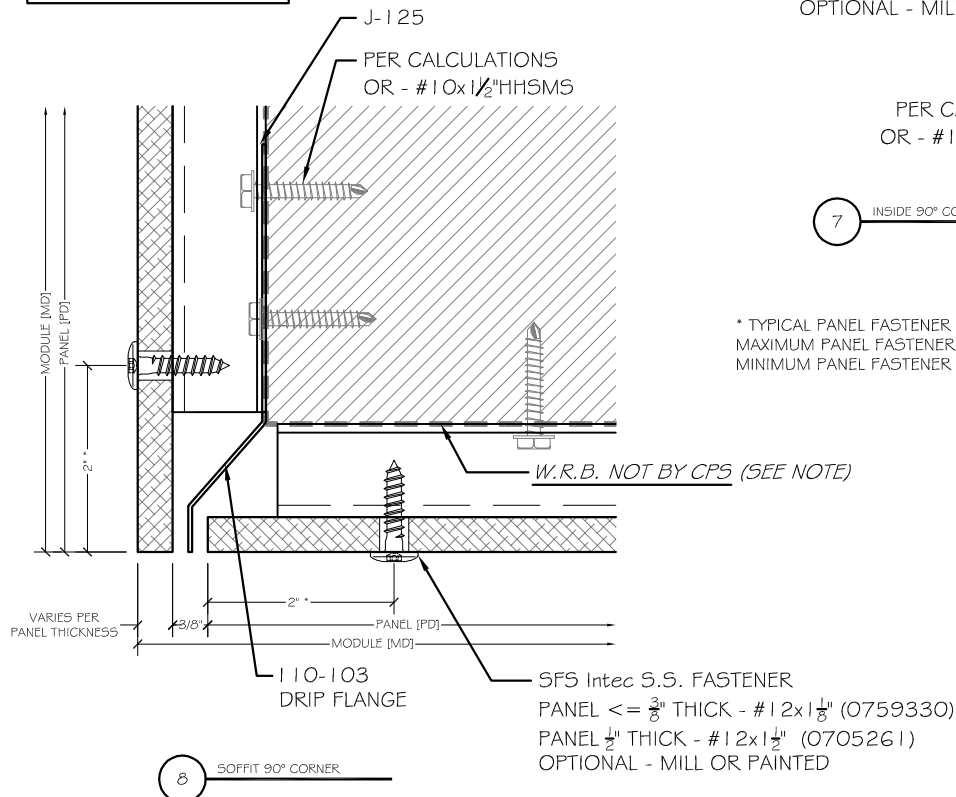
CPS-110-285 EXPOSED FASTENER TRESPA PANEL SYSTEM



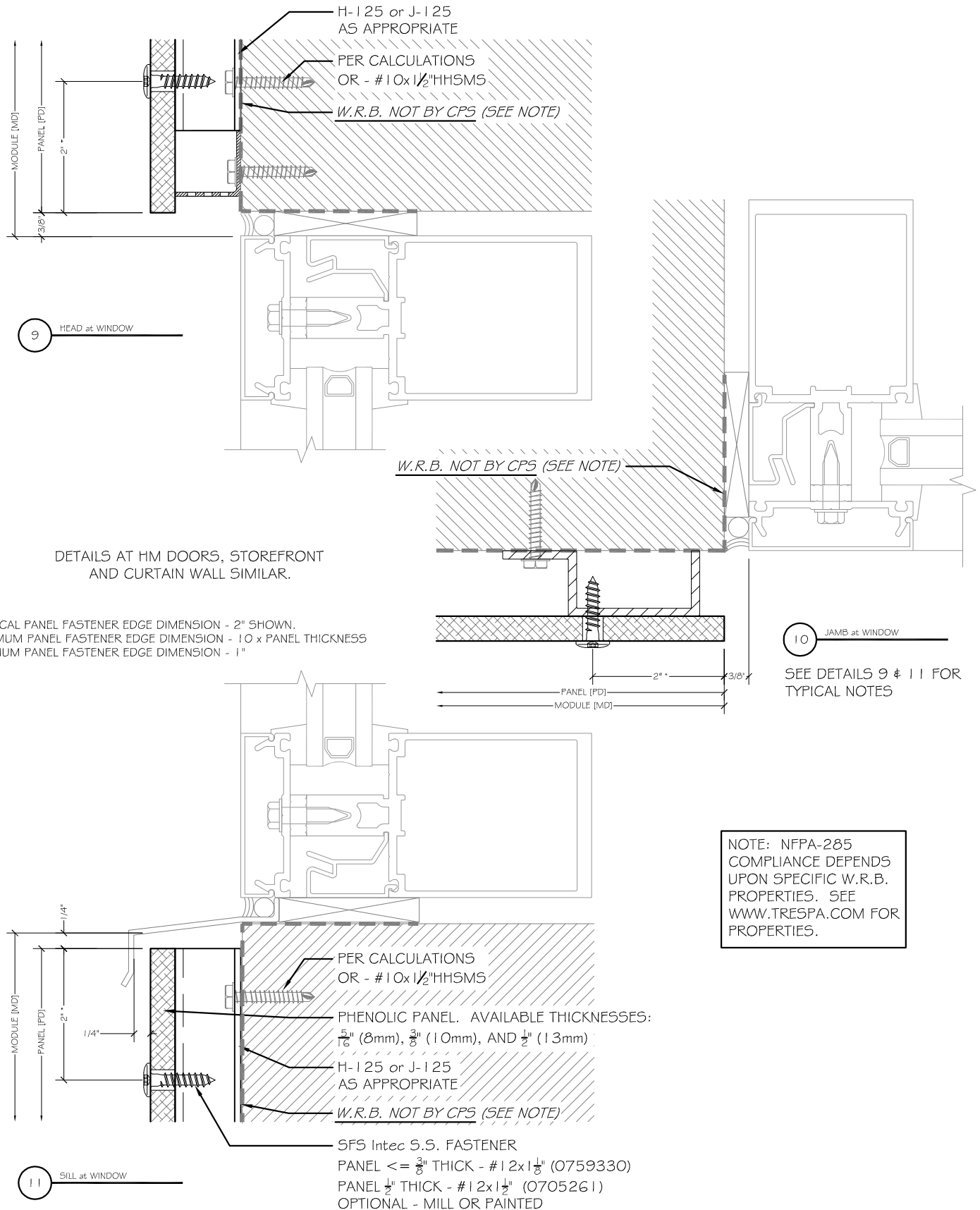
NOTE: NFPA-285
COMPLIANCE DEPENDS
UPON SPECIFIC W.R.B.
PROPERTIES. SEE
WWW.TRESPA.COM FOR
PROPERTIES.



* TYPICAL PANEL FASTENER EDGE DIMENSION - 2" SHOWN.
MAXIMUM PANEL FASTENER EDGE DIMENSION - 10 x PANEL THICKNESS
MINIMUM PANEL FASTENER EDGE DIMENSION - 1"

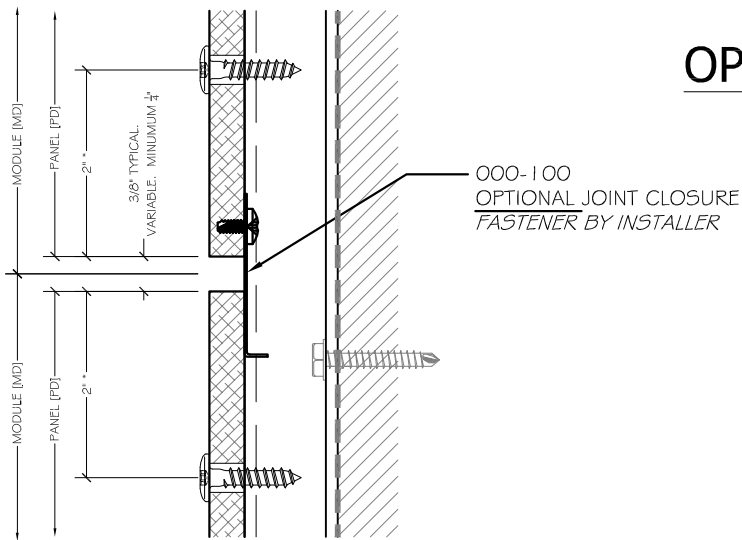


CPS-110-285 EXPOSED FASTENER TRESPA PANEL SYSTEM

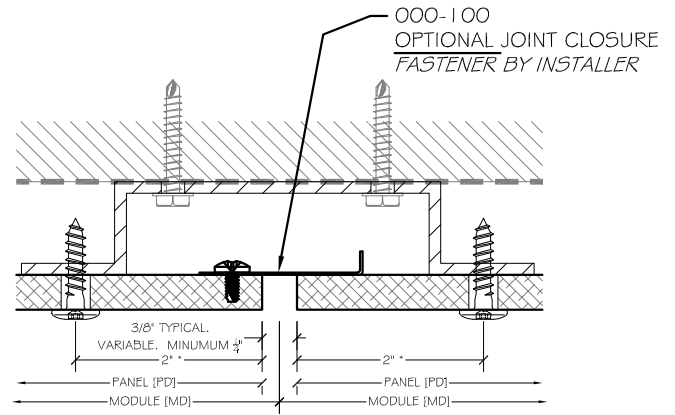


CPS-110-285 EXPOSED FASTENER TRESPA PANEL SYSTEM

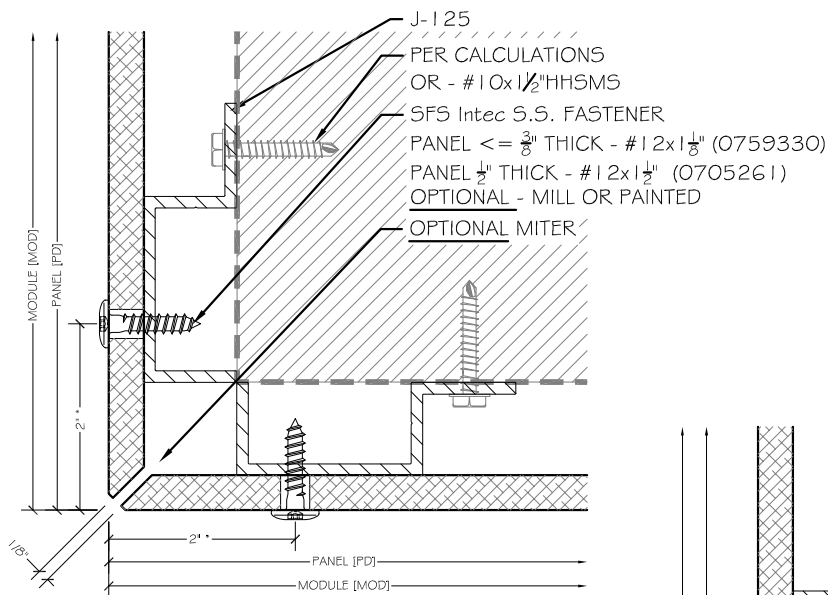
OPTIONAL FEATURES



12 INTERMEDIATE HORIZONTAL

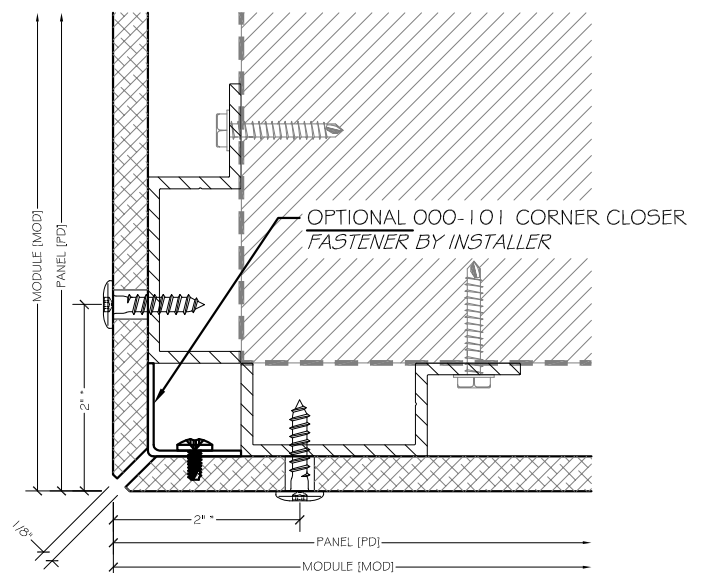


13 INTERMEDIATE VERTICAL



14 OUTSIDE 90° MITERED CORNER

NOTE: NFPA-285 COMPLIANCE DEPENDS UPON SPECIFIC W.R.B. PROPERTIES. SEE WWW.TRESPA.COM FOR PROPERTIES.

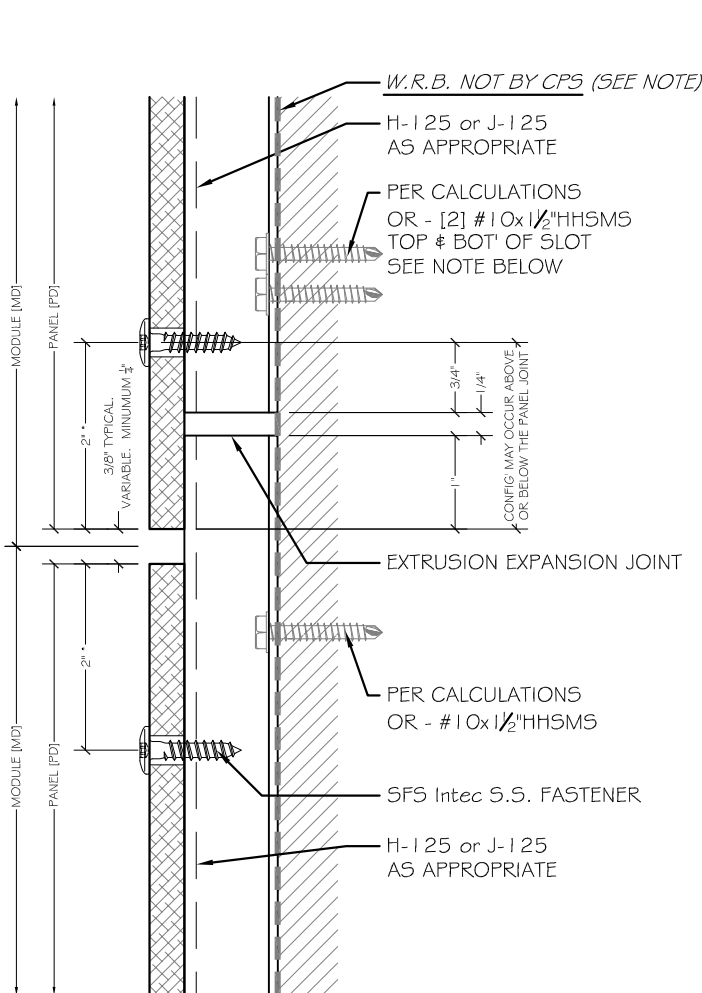


15 OUTSIDE 90° MITERED CORNER

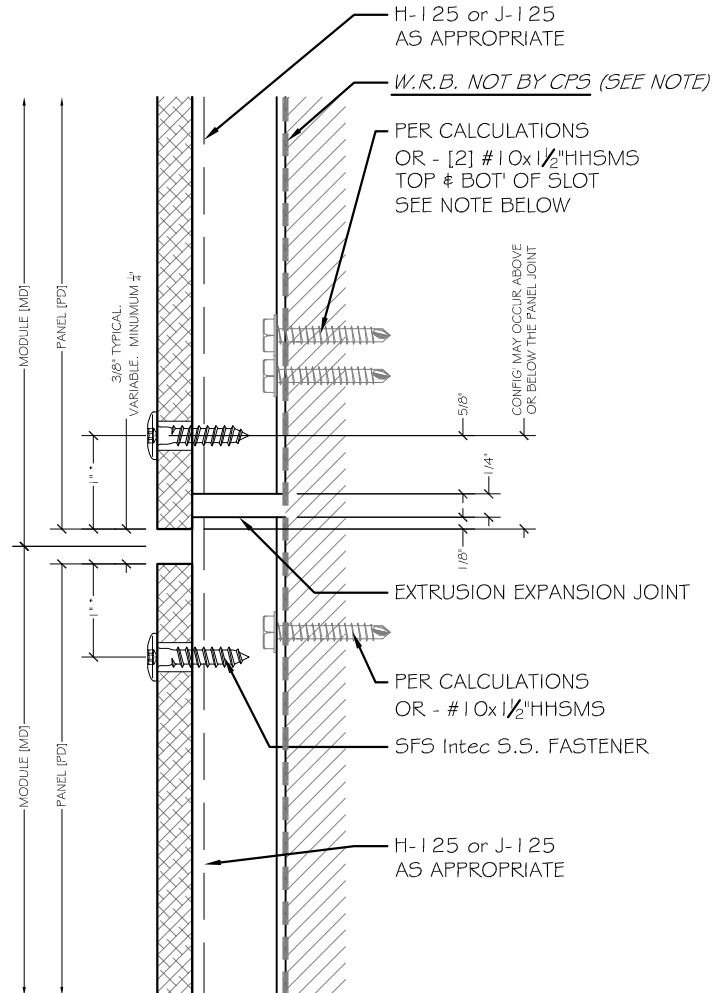
* TYPICAL PANEL FASTENER EDGE DIMENSION - 2" SHOWN.
MAXIMUM PANEL FASTENER EDGE DIMENSION - 10 x PANEL THICKNESS
MINIMUM PANEL FASTENER EDGE DIMENSION - 1"

CPS-110-285 EXPOSED FASTENER TRESPA PANEL SYSTEM

EXTRUSION EXPANSION JOINTS



16 EXTRUSION EXPANSION JT
TYPICAL



17 EXTRUSION EXPANSION JT
AT MINIMUM FASTENER EDGE

- NOTE: THE TWO [2] STRUCTURAL FASTENERS CONFIGURATION SHOWN ABOVE SHOULD ALWAYS OCCUR AT THE BOTTOM SLOT ON THE SYSTEM EXTRUSION CLOSEST TO THE EXPANSION JOINT, TO FORCE THE EXPANSION OF THE EXTRUSION UP AND AWAY FROM THE EXPANSION JOINT.
- NOTE: THE EXTRUSION EXPANSION JOINT MUST NEVER OCCUR WITHIN THE "BODY" OF THE PANEL. I.E., PAST THE PANEL EDGE FASTENERS.

NOTE: NFPA-285 COMPLIANCE DEPENDS UPON SPECIFIC W.R.B. PROPERTIES. SEE WWW.TRESPA.COM FOR PROPERTIES.

* TYPICAL PANEL FASTENER EDGE DIMENSION - 2" SHOWN.
MAXIMUM PANEL FASTENER EDGE DIMENSION - 10 x PANEL THICKNESS
MINIMUM PANEL FASTENER EDGE DIMENSION - 1"